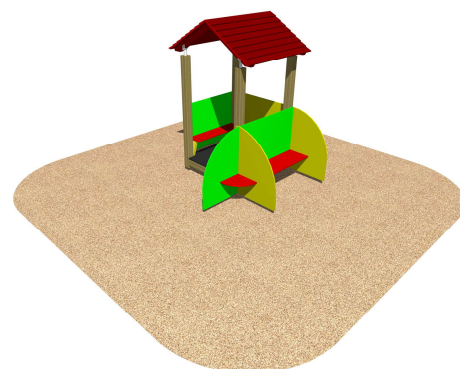
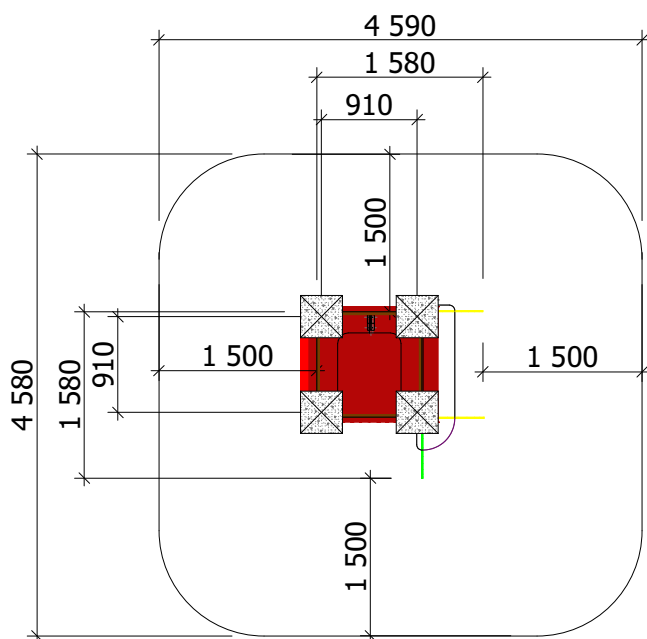
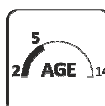


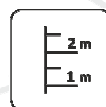
Construction are made from glued wood, galvanized steel and HDPE.



10 children



Children
from 2 - 5
years



The Fall height
 $H=0.45\text{ m}$



Weight
70 kg



Assembly
3 h
(without excavation
and concreting)

Minimal required area - 21 m²

Garums:	1 580 mm
Platums:	1 580 mm
Augstums:	1 950 mm

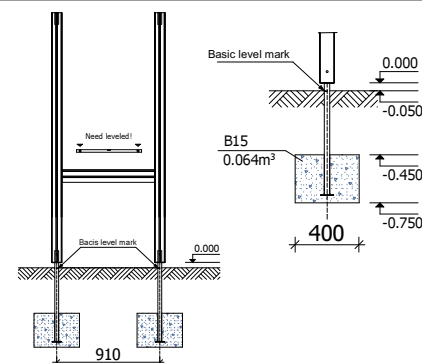
Playground are provided for outdoor use in supervising of adults

Drošības zonas garums:	4 590 mm
Drošības zonas platums:	4 580 mm
Nepieciešamā drošības platība:	21 m ²

Play equipment are established with concreted steel foundation in equipment location. Equipment are suitable for use in two days after concreting, when the foundation are totally solid. During assembling there are not children allowed in area.

Equipment safety checkings must be performed once in a week in high vandalism risk areas.

Maintenance are required once in every 3 months, depending on usage



Adequate temperature

T _{zemākā}	- 33.2 °C
T _{augstākā}	+56.1 °C

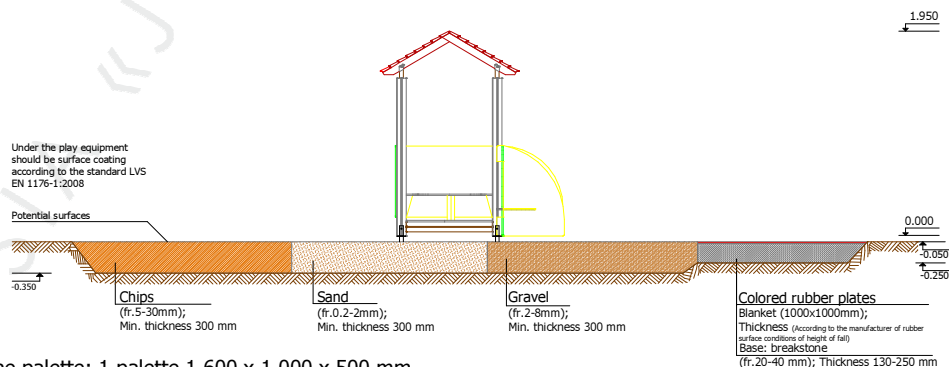


Snow load

1.16 kN/m²

Wing load

Stiprums 268 N



Transportation: One palette: 1 palette 1 600 x 1 000 x 500 mm

Spare parts: All needed spare parts and elements, when warranty time expires can be ordered in „Jūrmalas Mežaparki” Ltd., and all the goods will be ready for delivery in 3 days.

According to LVS EN 1176:2008

Manufactured
according:

