

KPL400602

Four tower w/ net & bridges, alu posts & full steel slide

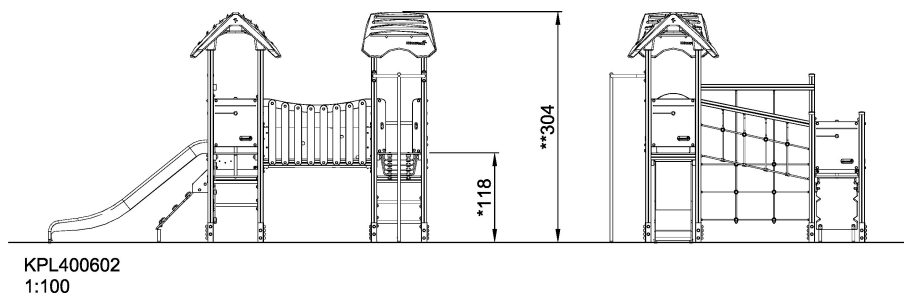
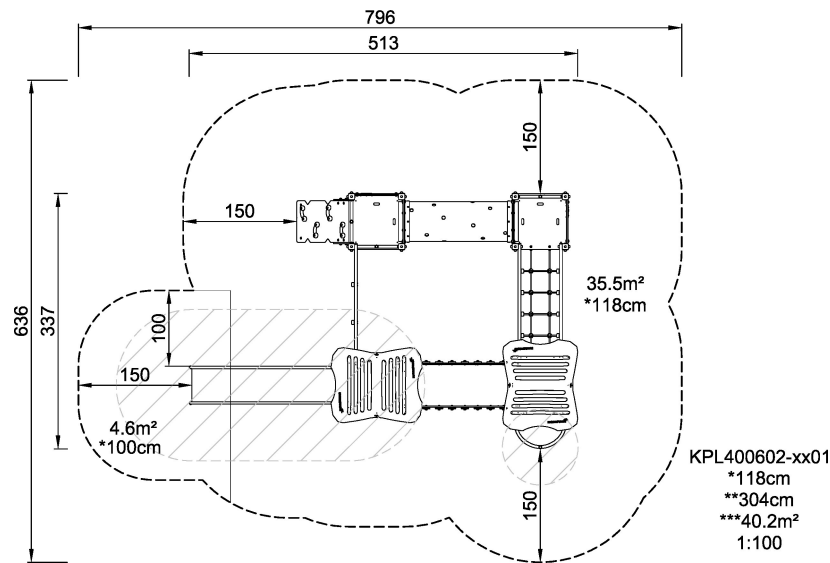


This four tower play structure offers varied creative play for a lot of children. The first tower can be reached via an inclined climbing wall with smiley steps offering a supported climb up to a higher level. From here a playful tunnel leads to the play net up to the next level. The fireman's pole offers a fast egress to the ground. Alternatively, a bridge can be crossed from where a classic slide can take the child to the ground or the child can pass the net with big meshes back to start.

Product Line	Traditional Play
Category	SIMPLY PLAY towers
Age group	2 - 6
Max. fall height (CM)	118
Total height (CM)	304
Safety Zone	40.2 m2



**IN-
GROU.**



* = Highest designated play surface.
** = Total height of product.

Weight/heaviest parts	kg.	Installation (Manpower)	Persons
Concrete required	NaN m3	Installation (Hours)	Hours
Foundation amount/footing	NaN	Excavation	NaN m3