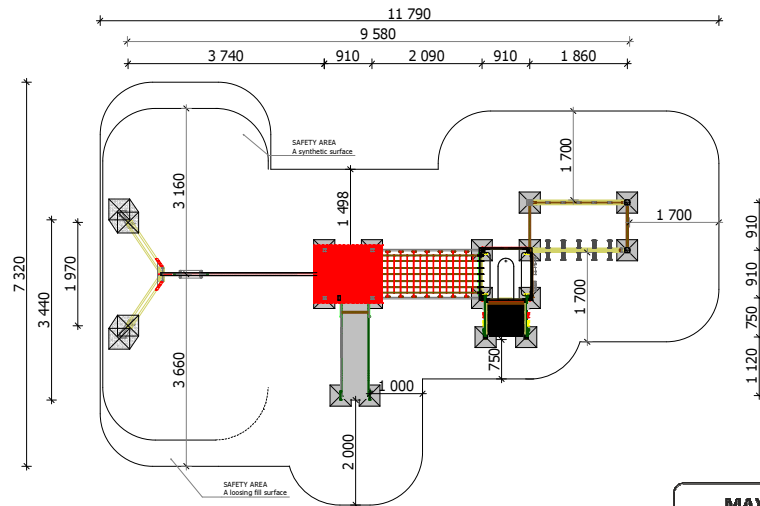
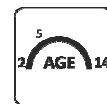


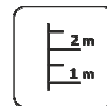
Construction are made from glued wood, galvanized steel and HDPE.



25 children



Children from 2 - 14 years



The Fall height
H=2.10 m



Weight
600 kg



Assembly
6 h
(without excavation
and concreting)

Minimal required area - 65 m²

Length: 9 580 mm
Width: 3 440 mm
Height: 3 050 mm

Playground are provided for outdoor use in supervising of adults

Length of safety area: 11 790 mm
Width of safety area: 7 320 mm
Required safety area: 70 m²

Play equipment are established with concreted steel foundation in equipment location. Equipment are suitable for use in two days after concreting, when the foundation are totally solid. During assembling there are not children allowed in area.

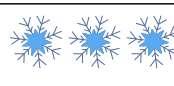
Adequate temperature

T_{min} - 33.2 °C
T_{max} +51.4 °C



Snow load

1.12 kN/m²

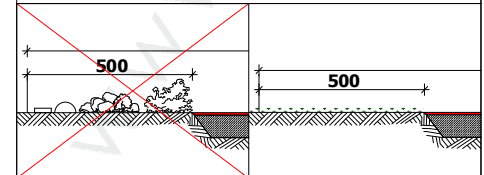


Wing load

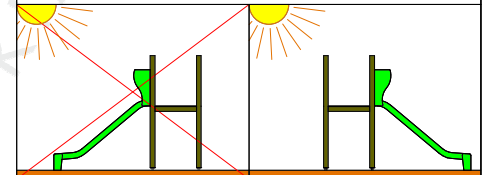
Stiprums 262.20 N



There must be in addition to 500 mm free of any obstacles in the swing direction to the rubber surface area.

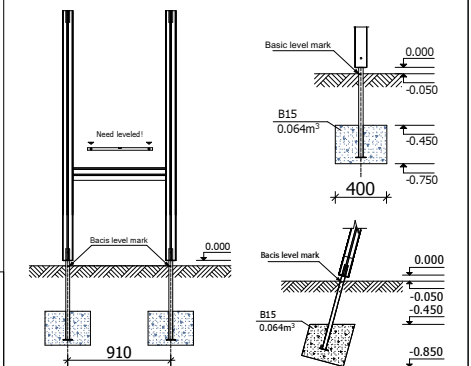


Do not place stainless steel slide directly to south!



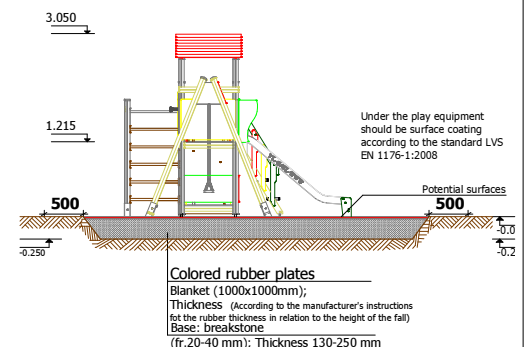
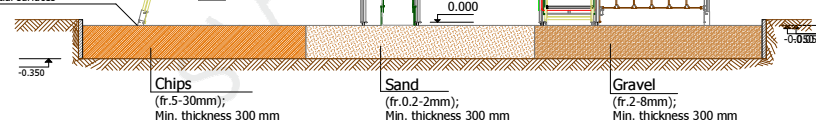
Equipment safety checkings must be performed once in a week in high vandalism risk areas.

Maintenance are required once in every 3 months, depending on usage



Under the play equipment could be surface coating according to the standard LVS EN 1176-1:2008

Potential surfaces



Colored rubber plates

Blanket (1000x1000mm);
Thickness (According to the manufacturer's instructions for the rubber thickness in relation to the height of the fall)
Base: breakstone (fr. 20-40 mm); Thickness 130-250 mm

Transportation: One palette and one pack: 1 palette 2 600 x 1 000 x 700 mm
1 pack - SUP metal detail

Spare parts: All needed spare parts and elements, when warranty time expires can be ordered in „Jūrmalas Mežaparki” Ltd., and all the goods will be ready for delivery in 3 days.

According to LVS EN 1176:2008

Manufactured according:

