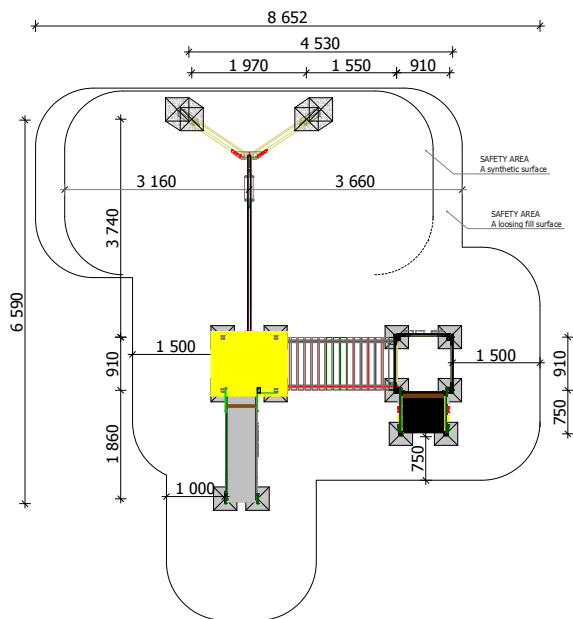
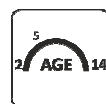


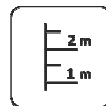
Construction are made from glued wood, galvanized steel and HDPE.



20 children



Children from 2 - 14 years

The Fall height
H=1.215 mWeight
660 kgAssembly
4 h
(without excavation
and concreting)

Minimal required area - 50 m²

Length: 4 530 mm
Width: 6 590 mm
Height: 3 050 mm

Playground are provided for outdoor use in supervising of adults

Length of safety area: 8 650 mm
Width of safety area: 9 130 mm
Required safety area: 53 m²

Play equipment are established with concreted steel foundation in equipment location. Equipment are suitable for use in two days after concreting, when the foundation are totally solid. During assembling there are not children allowed in area.

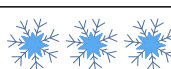
Adequate temperature

T_{min} - 33.2 °C
T_{max} +51.4 °C



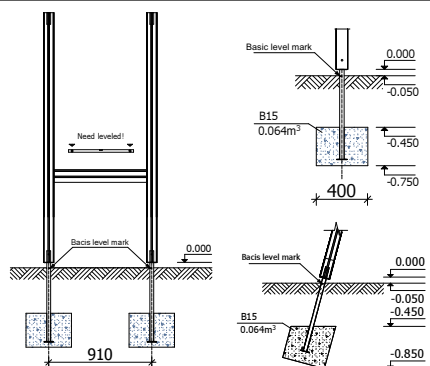
Snow load

1.12 kN/m²



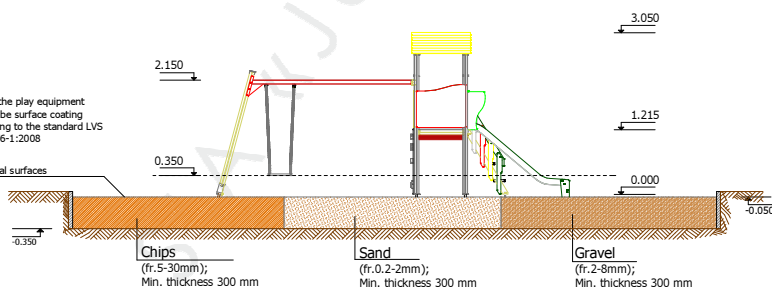
Wing load

Stiprums 262.20 N



Under the play equipment should be surface coating according to the standard LVS EN 1176-1:2008

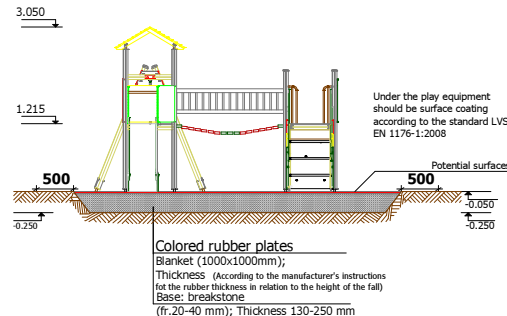
Potential surfaces



Chips
(fr. 5-30mm);
Min. thickness 300 mm

Sand
(fr. 0.2-2mm);
Min. thickness 300 mm

Gravel
(fr. 2-8mm);
Min. thickness 300 mm



Colored rubber plates
Blanket (1000x1000mm);
Thickness (According to the manufacturer's instructions
for the rubber thickness in relation to the height of the fall)
Base: breakstone
(fr. 20-40 mm); Thickness 130-250 mm

Transportation: One palette and one pack: 1 palette 2 600 x 1 000 x 600 mm
1 pack - SUP metal detail

Spare parts: All needed spare parts and elements, when warranty time expires can be ordered in „Jūrmalas Mežaparki” Ltd., and all the goods will be ready for delivery in 3 days.

According to LVS EN 1176:2008

Manufactured
according:

