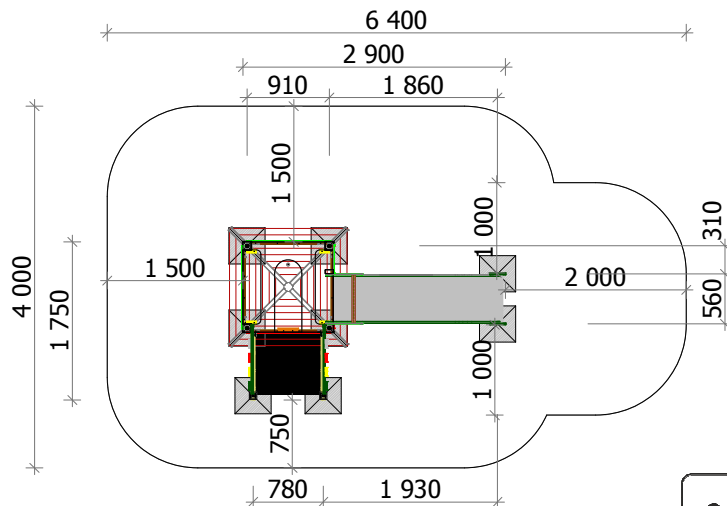


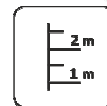
Construction are made from glued wood, galvanized steel and HDPE.



15 children



Children  
from 5 - 14  
years



The Fall height  
 $H=1.20\text{ m}$



Weight  
210 kg



**Assembly**  
**3 h**  
(without excavation  
and concreting)

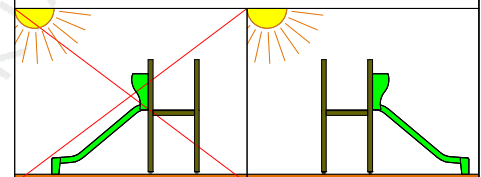
Minimal required area - 23 m<sup>2</sup>

Length: 1 750 mm  
Width: 2 900 mm  
Height: 3 180 mm

Playground are provided for outdoor use in supervising  
of adults

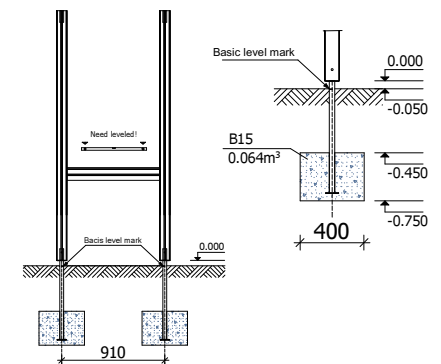
Length of safety area: 4 000 mm  
Width of safety area: 6 400 mm  
Required safety area: 23 m<sup>2</sup>

Do not place stainless steel slide directly to south!



Equipment safety checkings must be performed once in a week in high vandalism risk areas.

Maintenance are required once in every 3 months, depending on usage



Play equipment are established with concreted steel foundation in equipment location. Equipment are suitable for use in two days after concreting, when the foundation are totally solid. During assembling there are not children allowed in area.

Adequate temperature

$T_{\min}$	- 33.2 °C
$T_{\max}$	+70.45 °C

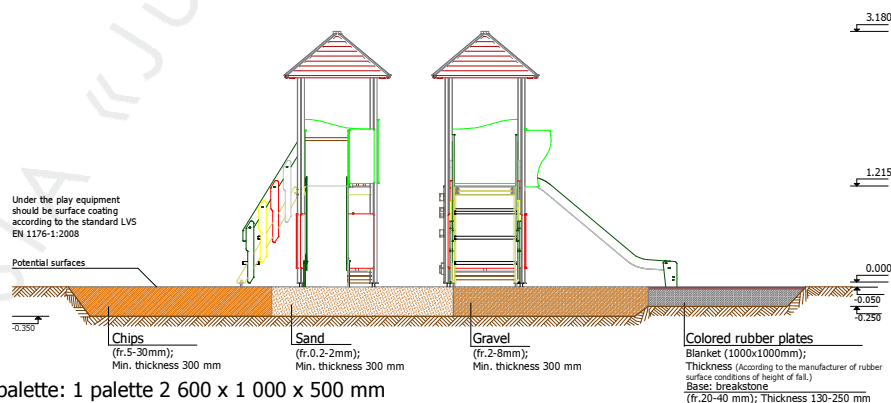


## Snow load

1.54 kN/m<sup>2</sup>

## Wing load

Strength **427.4 N**



Transportation: One palette: 1 palette 2 600 x 1 000 x 500 mm

Spare parts: All needed spare parts and elements, when warranty time expires can be ordered in „Jūrmalas Mežaparki” Ltd., and all the goods will be ready for delivery in 3 days.

According to LVS EN 1176:2008

Manufactured  
according:

