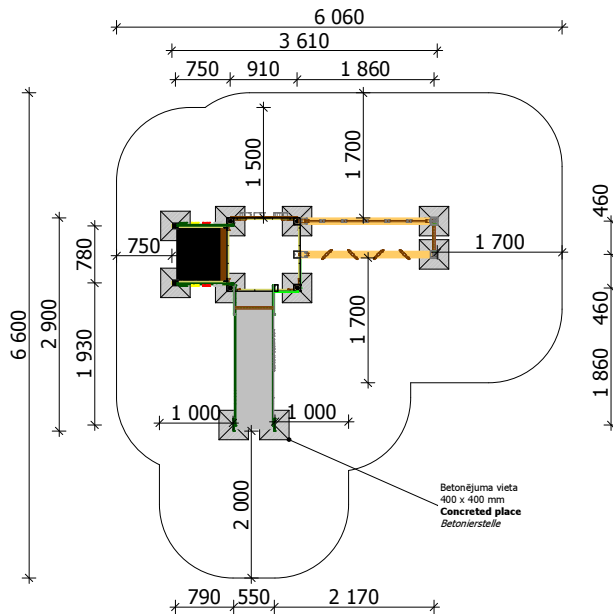


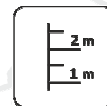
Construction are made from glued wood, galvanized steel and HDPE.



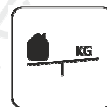
15 children



Children from 5 - 14 years



The Fall height H=1.80 m



Weight 190 kg



Assembly 4 h (without excavation and concreting)

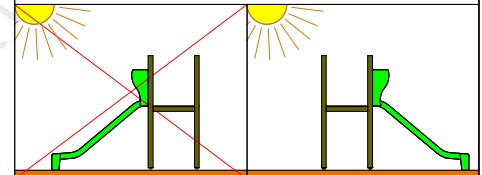
Minimum required area - 31 m²

Lenght: 3 610 mm
Width: 2 900 mm
Height: 2 200 mm

Playground are provided for outdoor use in supervising of adults

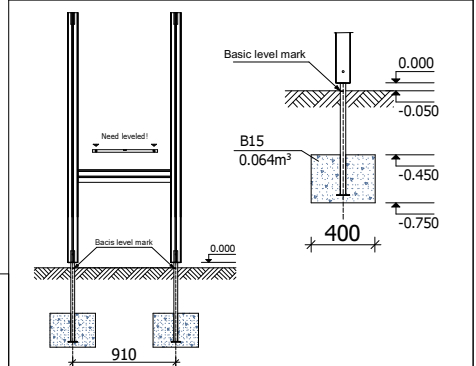
Lenght of safety area: 6 060 mm
Width of safety area: 6 600 mm
Required safety area: 31 m²

Do not place stainless steel slide directly to south!



Equipment safety checkings must be performed once in a week in high vandalism risk areas.

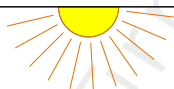
Maintainance are required once in every 3 months, depending on usage



Play equipment are established with concreted steel foundation in equipment location. Equipment are suitable for use in two days after concreting, when the foundation are totally solid. During assambling there are not children allowed in area.

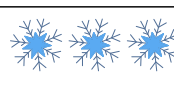
Adequate temperature

T_{min} - 33.2 °C
T_{max} +63.7 °C



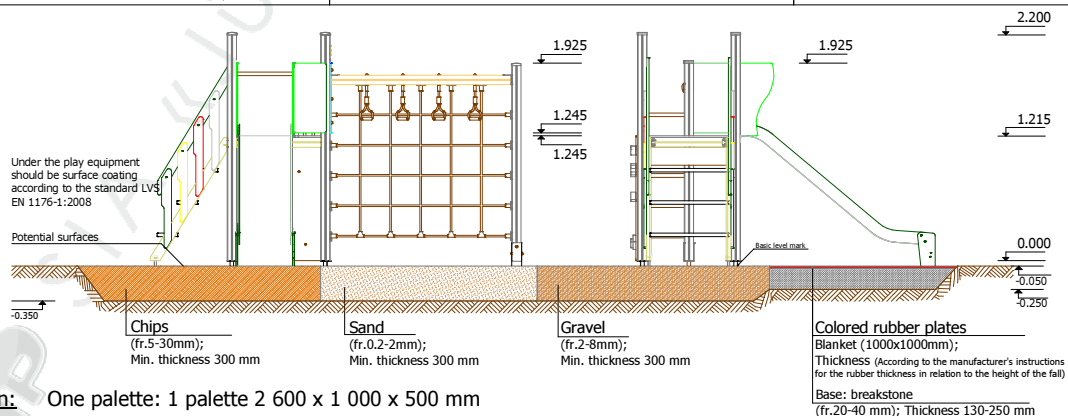
Snow load

1.10 kN/m²



Wing load

Strength 479 N



Transportation: One palette: 1 palette 2 600 x 1 000 x 500 mm

Spare parts: All needed spare parts and elements, when warranty time expires can be ordered in „Jūrmalas Mežaparki” Ltd., and all the goods will be ready for delivery in 3 days.