

# Multispinner Carousel, GreenLine

ELE400063

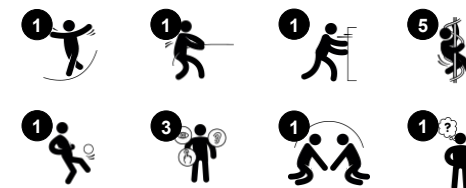
**KOMPAN**  
Let's play



Item no. ELE400063-3017

## General Product Information

Dimensions LxWxH	176x176x77 cm
Age group	3+
Play capacity (users)	7
Colour options	



The quirky look of the fabulous Multispinner Carousel attracts children to try it out again and again. Easily accessible due to its inclination having one lower and one higher end, the Multispinner embraces both younger and older children. The bowls make comfortable seating options. The middle part is a show-of stage for those with extremely good balance skills. With

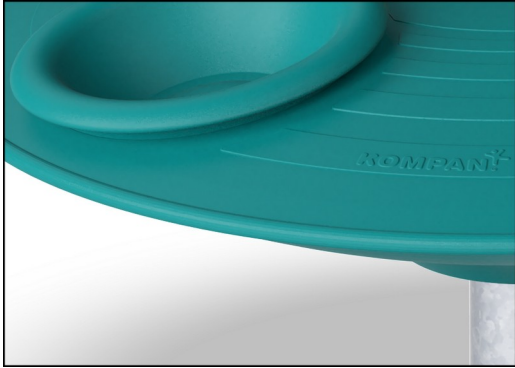
great cooperation skills, the Multispinner can be spun from seated position, having children coordinate their swinging movements, leaning forwards and backwards in an agreed rhythm. Thus the Multispinner, apart from being great fun, trains cooperation and team work. The spinning movement is a great training of the vestibular system, the sense of balance in

particular. The sense of balance is fundamental to for instance the ability to sit still on a chair, concentrating. In other words, the Multispinner is great play with a purpose.

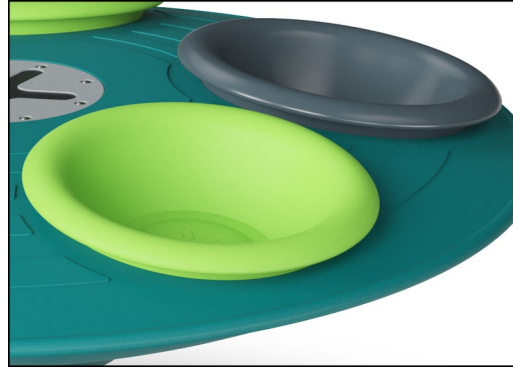


# Multispinner Carousel, GreenLine

ELE400063



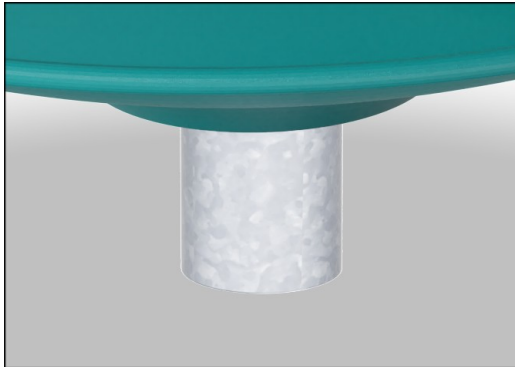
The GreenLine Multispinner base and bowl in dark teal color are designed with molded PP parts which consist of 25% recycled post consumer waste and 75% virgin material. GreenLine ensures the lowest possible CO2e emission factor.



The bowls are made of recyclable PE. The bowls are moulded in one piece with integrated metal thread bushings and water drain hole to ensure high durability in all climates around the world.



Heavy duty engineered bearing system with single row deep groove ball bearings with rubber seals. The fully closed bearing construction is lifetime lubricated and maintenance free.



The steel surfaces are hot dip galvanised inside and outside with lead free zinc. The galvanisation has excellent corrosion resistance in outside environments and requires low maintenance.



The Multispinner carousel is offered in three different color combination. Two with a grey base and a third GreenLine version in dark teal color.



GreenLine versions in dark teal color are designed with molded PP parts which consist of 25% recycled post consumer waste and 75% virgin material. GreenLine ensures the lowest possible CO2e emission factor.

Item no. ELE400063-3017

## Installation Information

Max. fall height	100 cm
Safety surfacing area	26.1 m <sup>2</sup>
Number of installers	2
Total installation time	5.4
Excavation volume	0.00 m <sup>3</sup>
Concrete volume	0.00 m <sup>3</sup>
Footing depth (standard)	0 cm
Shipment weight	184 kg
Anchoring options	Surface ✓ In-ground ✓

## Warranty Information

Hollow PE parts	10 years
Bearing construction	5 years
Hot dip galvanised steel	Lifetime
Hardware	10 years
Spare parts guaranteed	10 years





Cradle to Gate A1-A3	Total CO <sub>2</sub> emission	CO <sub>2</sub> e/kg	Recycled materials
	kg CO <sub>2</sub> e	kg CO <sub>2</sub> e/kg	%
ELE400063-3017	264.90	2.00	32.30
ELE400063-3017	264.90	2.00	32.30

The overall framework applied for these factors is the Environmental Product Declaration (EPD), which quantifies "environmental information on the life cycle of a product and enable comparisons between products fulfilling the same function" (ISO, 2006). This follows the structure and applies a Life-Cycle Assessment approach to the entire Product stage from raw material through manufacturing (A1-A3))

**Kompan A/S**  
 C.F. Tietgens Boulevard 32C  
 DK-5220 Odense SØ  
 Denmark



### Validation of CO<sub>2</sub> calculation of: Freestanding play equipment



Data version no. 2021-09-27

The CO<sub>2</sub> calculation and data are in compliance with the principles of a carbon footprint impact according to the GHG protocol (Greenhouse Gas Protocol), Scope 3, cradle to gate related to all individual components in the product category: "Freestanding play equipment" represented by item no.: GXY916012-3417.

(Scope 3 emissions include emission sources in the upstream and downstream value chain).

**Date: 15. October 2021 | Valid until: 15. October 2023**

**Validated by:**

Bente Hviid, Senior Consultant

Peter Bendtsen, Senior Consultant

Validation based on report: Validation of CO<sub>2</sub> calculation of 8 categories of Kompan product line, version 1.0, prepared by: Bureau Veritas HSE, Denmark: Bente Hviid and Peter Bendtsen.

**Publication date: 15. October 2021**

**By Bureau Veritas HSE**  
 www.bureauveritas.dk  
 +45 7731 1000

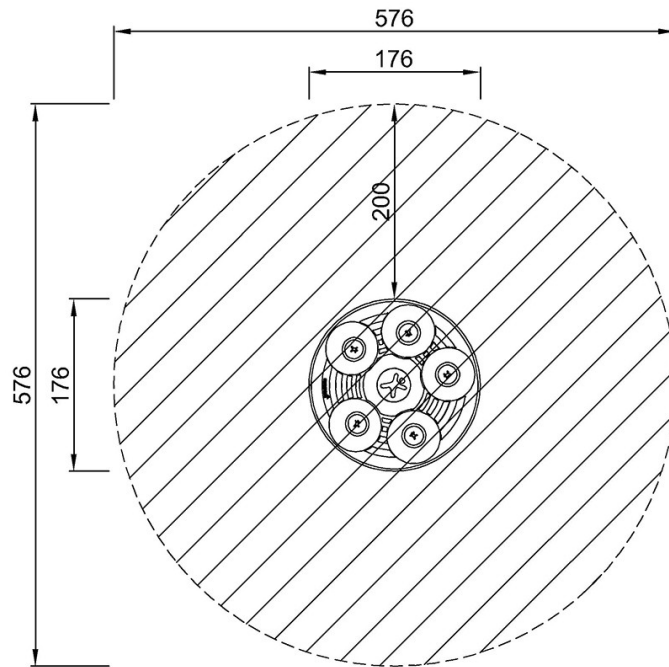


# Multispinner Carousel, GreenLine

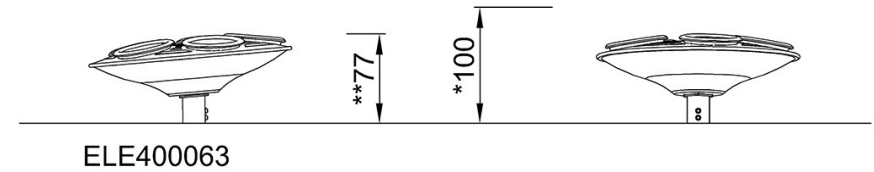
ELE400063

\* Max fall height | \*\* Total height | \*\*\* Safety surfacing area

\* Max fall height | \*\* Total height



ELE400063  
\*100cm  
\*\*77cm  
\*\*\*26.1m<sup>2</sup>



[Click to see TOP VIEW](#)

[Click to see SIDE VIEW](#)